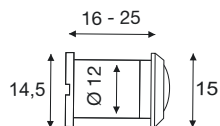


Beschläge
& mehr



Türspione, Türstopper



160° Türspion, Ø12mm, Türstärke
16-25mm

Material: Messing

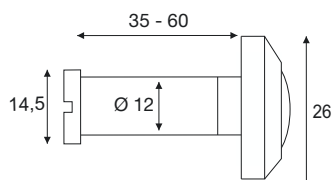
20 / 200

Oberfläche

Art. No.

Verchromt

52.2339



180° Türspion, Ø12mm, Türstärke
35-60mm

Material: Messing

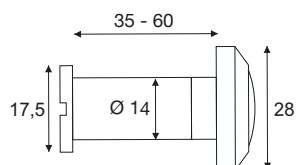
20 / 200

Oberfläche

Art. No.

Verchromt

52.2345



200° Türspion, Ø14mm, Türstärke
35-60mm

Material: Messing

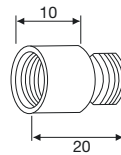
20 / 200

Oberfläche

Art. No.

Verchromt

52.2366

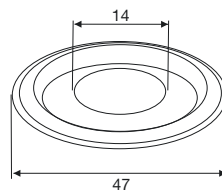


Verlängerung 10mm

Material: Messing

20 / 200

Ø	Art. No.
12mm	52.2350
14mm	52.2371

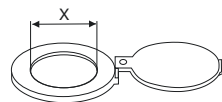


Abdeckkrosette Ø14mm

Material: Messing

20 / 200

Oberfläche	Art. No.
Verchromt	52.2373

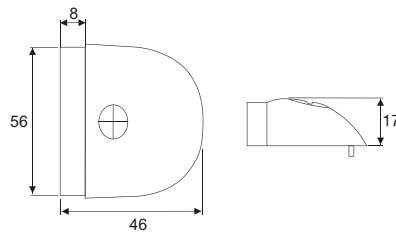


Schließer für Türspion Ø 14mm

Material: Messing

20 / 200

	Art. No.
Oberfläche	X = 12mm
Verchromt	52.2376

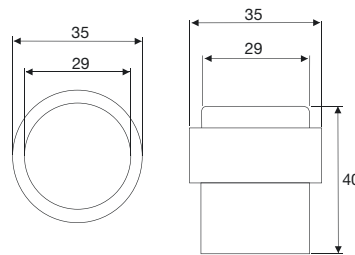


BV 17/56

Material: Edelstahl - Güte 1.4301 mit Gummipuffer

1

Oberfläche	Art. No.
Gebürstet	52.2391

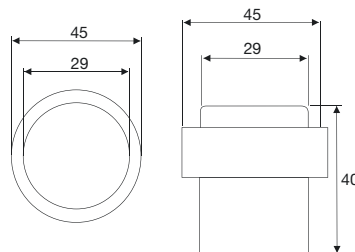


BV 40/35

Material: Edelstahl - Güte 1.4301 - mit Gummiring

10

Oberfläche	Art. No.
Gebürstet	52.2386

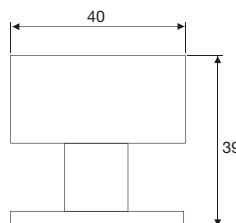


BV 40/45

Material: Edelstahl - Güte 1.4301 - mit Gummiring

10

Oberfläche	Art. No.
Gebürstet	52.2387

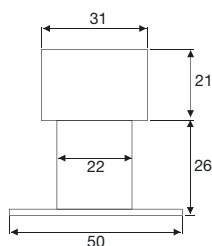


BV 39/40

Material: Edelstahl - Güte 1.4301 - mit Gummiring

10

Oberfläche	Art. No.
Gebürstet	52.2389

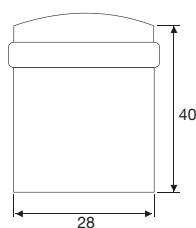


BV 47/50

Material: Edelstahl - Güte 1.4301 - mit Gummiring

1

Oberfläche	Art. No.
Gebürstet	52.2390

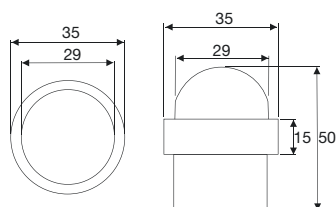


BV 40/28

Material: Edelstahl - Güte 1.4373 - mit Gummiring

10

Oberfläche	Art. No.
Gebürstet	52.2401

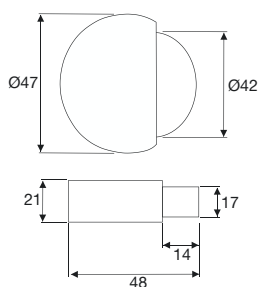


BV 50/35

Material: Edelstahl - Güte 1.4301 - mit Gummiring

10

Oberfläche	Art. No.
Gebürstet	52.2388

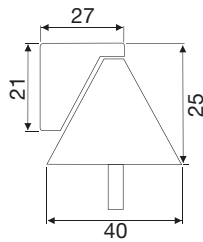


BV 21/47

Material: Edelstahl - Güte 1.4301 - mit Gummiring

10

Oberfläche	Art. No.
Gebürstet	52.2400

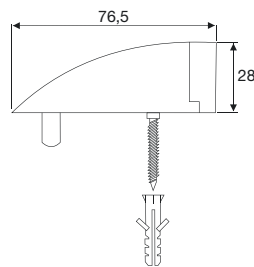


BV 25/40

Material: Zamak in Edelstahloptik, mit Gummistopper

10

Oberfläche	Art. No.
Gebürstet	52.2397

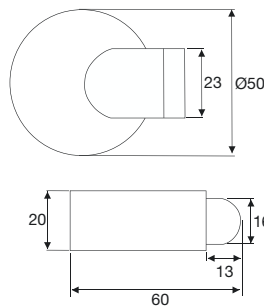


BV 28/28

Material: Zamak in Edelstahloptik, mit Gummistopper

10

Oberfläche	Art. No.
Gebürstet	52.2395

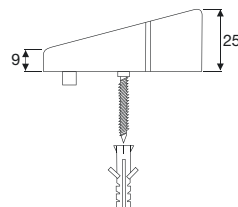


BV 20/50

Material: Edelstahl - Güte 1.4301 - mit Gummipuffer

10

Oberfläche	Art. No.
Gebürstet	52.2399

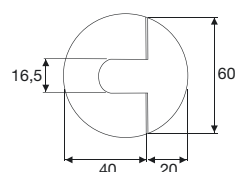


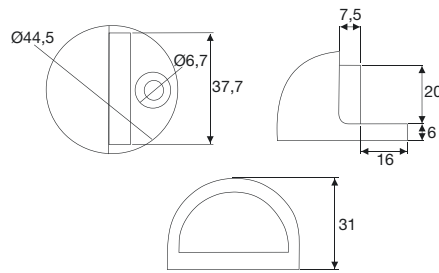
BV 25/60

Material: Edelstahl - Güte 1.4301 - mit Gummipuffer

10

Oberfläche	Art. No.
Gebürstet	52.2394





BV 44/8

Material: Messing, mit Gummipuffer

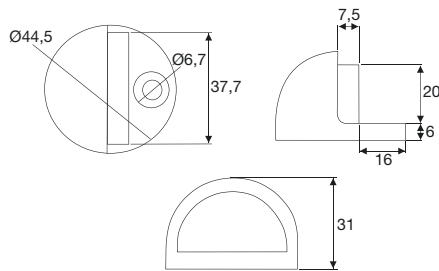
20

Oberfläche

Art. No.

Poliert

52.2382



BV 44/9

Material: Messing, mit Gummipuffer

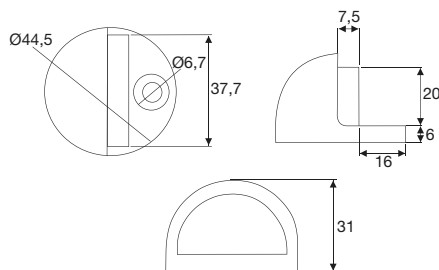
20

Oberfläche

Art. No.

Chrom poliert

52.2383



BV 44/10

Material: Messing, mit Gummipuffer

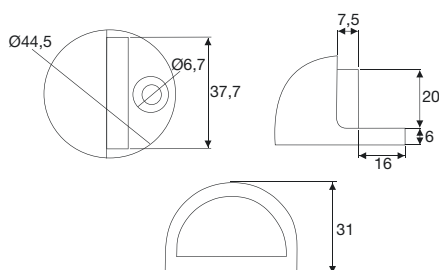
20

Oberfläche

Art. No.

Matt verchromt

52.2384



BV 44/10

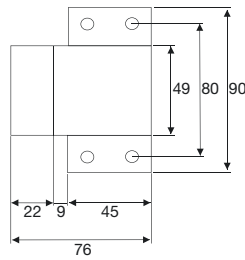
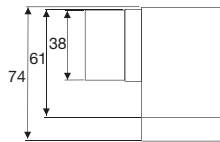
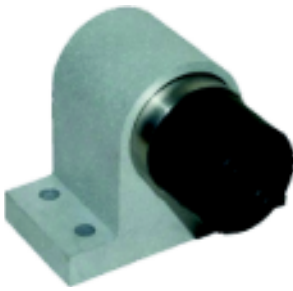
Material: Messing, mit Gummipuffer

20

Art. No.

Edelstahl Finish

52.2385

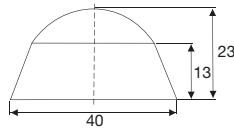


BV 74/90

Material: Aluminium, mit Gummipuffer

1

Oberfläche	Art. No.
Gebürstet	52.2393

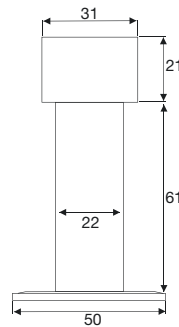


WV 23/40

Material: Edelstahl - Güte 1.4301 - mit Gummiring

10

Oberfläche	Art. No.
Gebürstet	52.2396



WV 82/50

Material: Edelstahl - Güte 1.4301 - mit Gummiring

1

Oberfläche	Art. No.
Gebürstet	52.2392



TV 120/45

Material: Edelstahl - Güte 1.4301 - mit Gummiring

5

Oberfläche	Art. No.
Gebürstet	52.2398